

# FUELEQUIPMENT.COM

Custom *fuelling* solutions

## Truck, Trailer & Demountable Tanks for hydrocarbon liquid fuels

Australian Fuelling Systems & Equipment manufactures a wide range of fuel transport tanks. These include single and multi compartment tanks and can be fitted with pressureless overflow protection systems for bottom filling, Scully type bottom filling system or simple top fill. Tanks can optionally be manufactured in accordance with AS2809 to allow inclusion on a vehicle which can be approved to be registered as a Dangerous Goods vehicle for carriage of Class 3 Flammable Liquids (ULP, AvGas, JET-A1) on public roads.



Australian  
designed &  
manufactured

### Tank features

- Finished in white 2 part epoxy enamel
- HazChems and/or product signs included
- Calibrated dipstick of 20x20x3mm black anodised aluminium with replaceable wear block.
- 80mm dip/fill tube with lockable cap
- Pressure & vacuum vent with rollover shutoff valve
- Rollover coaming to protect tank top fittings
- Tanks pressure or hydro tested.
- Dual coaming drains
- Supplied with 4 x spring-loaded brackets for chassis mounting
- Demountables supplied with separate sub-frame
- 2 x lift lugs on tank top - empty lift only
- 50mm outlet with ball valve with Kamlok & dustcap
- All enclosed spaces with sockets & plugs for degassing
- Multiple baffles according to tank size

### Australian Fuelling Systems & Equipment

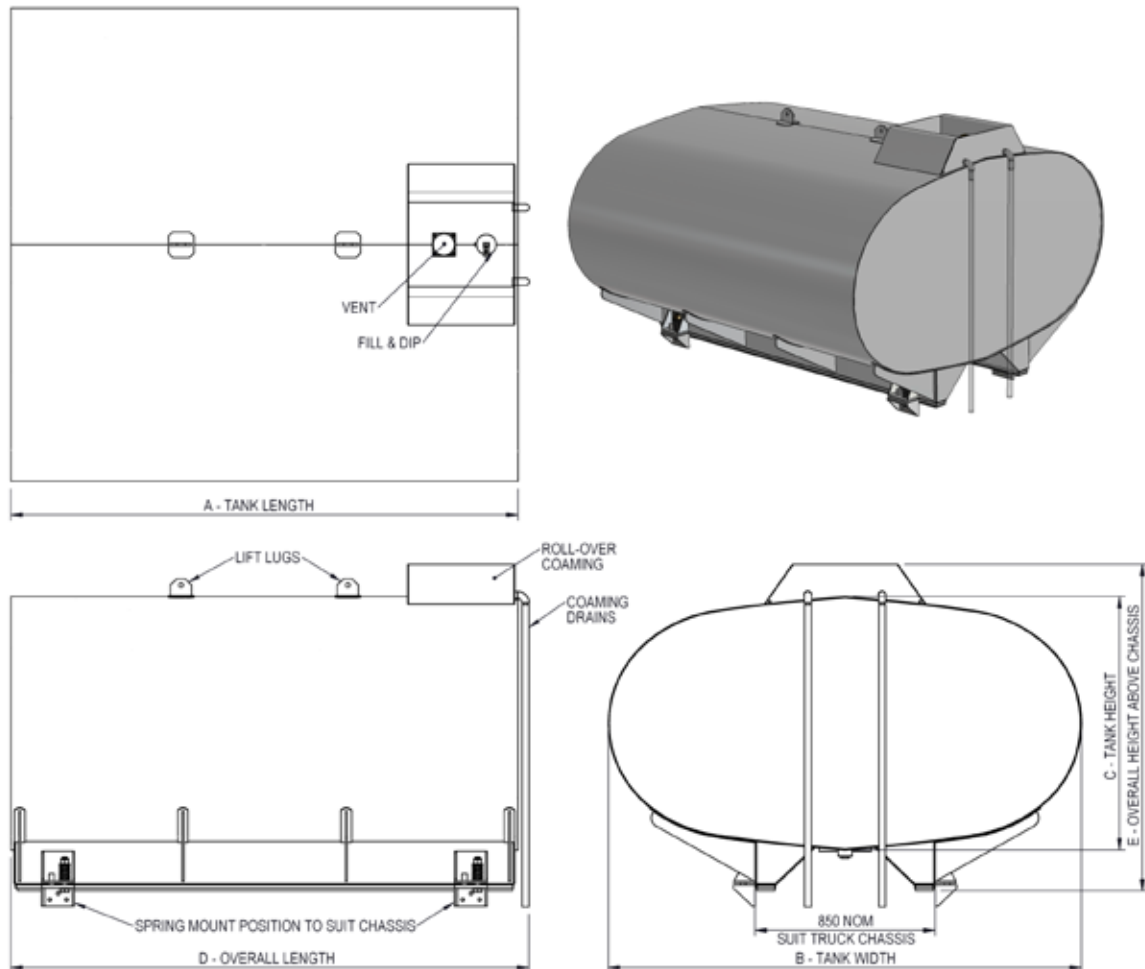
PO Box 7162 NEMSC 2348 7-11 Armstrong Street Tamworth 2340

Ph: +61 2 6760 7816 Fax: +61 2 6760 7826

[www.fuelequipment.com](http://www.fuelequipment.com)

**Australian  
FUELLING  
Systems & Equipment**

## Diesel Demountable/Transport Tanks



### Diesel Transport/Demountable Tanks

| SKU    | Description            | Width mm | Height mm | Length mm | Volume | SFL   |  |
|--------|------------------------|----------|-----------|-----------|--------|-------|--|
| 123024 | 1000 litre transport   | 1470     | 750       | 1200      | 1039   | 1007  |  |
| 123005 | 2000 litre transport   | 1470     | 750       | 2400      | 2078   | 2015  |  |
| 123026 | 3000 litre transport   | 2300     | 1200      | 1500      | 3251   | 3153  |  |
| 123029 | 4000 litre transport   | 2300     | 1200      | 1800      | 3902   | 3785  |  |
| 123052 | 5000 litre transport   | 2300     | 1200      | 2400      | 5202   | 5046  |  |
| 123054 | 6000 litre transport   | 2300     | 1200      | 3000      | 6503   | 6308  |  |
| 123057 | 7000 litre transport   | 2300     | 1200      | 3200      | 6936   | 6728  |  |
| 123058 | 8000 litre transport   | 2300     | 1200      | 3600      | 7803   | 7569  |  |
| 123076 | 9000 litre transport   | 2300     | 1200      | 4200      | 9104   | 8830  |  |
| 123061 | 10,000 litre transport | 2300     | 1200      | 4800      | 10404  | 10092 |  |

**Australian Fuelling Systems & Equipment**

PO Box 7162 NEMSC 2348 7-11 Armstrong Street Tamworth 2340

Ph: +61 2 6760 7816 Fax: +61 2 6760 7826

[www.fuelequipment.com](http://www.fuelequipment.com)

**Australian**  
**FUELLING**  
**Systems & Equipment**

# FUELEQUIPMENT.COM

Custom fuelling solutions

## Diesel Demountable/Transport Tanks



Some examples of truck or trailer mounted transport tanks in use.

### Options Available

Tanks can be manufactured with options to suit most applications and include the following.

#### Bottom filling systems

Can be pressureless float vent type with choice of drybreak adaptor to connect for filling or Scully type as used in fuel depots with API drybreak adaptors for connection.

#### Man access Hatches

Single or multiple man access hatches can be fitted.

#### Multiple compartments

Can be included to suit various volumes & products.

#### Outlet valves

Choice of outlet piping size & valve types - ball or butterfly types with adaptors. Outlet location can be configured to suit intended system.

#### Signs

HazChems and other signs to suit product carried.

#### Dipsticks

Can be supplied compliant to National Measurements Institute certified for resale use.

#### Dispensing

We can design & supply a dispensing system to suit any application to be fitted to truck or to the tank assembly for demounting.

Can be hydraulically, pneumatically or engine powered.

Metering system to National Measurement Institute certified for resale use.

Dual flow and with fittings to allow self-filling of tank if required.

**Australian Fuelling Systems & Equipment**

PO Box 7162 NEMSC 2348 7-11 Armstrong Street Tamworth 2340

Ph: +61 2 6760 7816 Fax: +61 2 6760 7826

[www.fuelequipment.com](http://www.fuelequipment.com)

**Australian  
FUELLING  
Systems & Equipment**

# FUELEQUIPMENT.COM

Custom fuelling solutions

## General Information

The following information is provided for general guidance only on topics as shown. No responsibility is accepted for any outcomes or situations arising from your interpretation of any of the guides.

### Compliances

Tanks constructed by Australian Fuelling Systems & Equipment for transporting fuels and shown within this brochure are for Combustible Liquids (ie diesel) only but can optionally be built to AS2809.

This standard is required for all vehicles intended to be registered as a Dangerous Goods Vehicle for transport of Class 3 Flammable Liquids on public roads.

A vehicle intended only for carriage of Class 2 Combustible Liquids (ie Diesel) need not be so compliant but be aware that to enable access to any major oil Company depot, the vehicle must be compliant in all respects - ie the vehicle as a whole, not just the tank.

Please call us on 1800-025 869 if you require any clarification on these requirements.

### Warranty

Our tanks have a 5 year warranty for integrity when used in accordance with standard industry practice.

All equipment fitted is covered by 12 month warranty for performance as specified and to the limits of the manufacturers warranty.

### Fuel Categories

Liquid fuels are categorised according to their flashpoint (see AS1940) Class 3 Flammable Liquids include ULP, Avgas, Jet-A1, Mogas, most Kerosenes and a wide range of other fluids including solvents. These have a lower flashpoint than Diesel, which is classified as a Combustible Fluid C2.

Requirements for tanks, vehicles and associated equipment and assemblies etc. are more stringent for Class 3 Flammable Liquids than for a Combustible Liquid C2. See "Compliances" column.

### Tank Mounting

These tanks are supplied with 4 x spring-loaded brackets suitable for direct mounting to your vehicle chassis rails. If you specify a "demountable" tank then it is supplied with a separate steel sub-frame to which the tank is attached via these 4 x spring-loaded brackets. You must then secure this sub-frame securely to your vehicle tray - any restrictions or impediment to allowing the tank to flex on these mountings will void all warranty.

### Dispensing fuels

If you would like a quotation on a suitable dispensing system for your project we need to know:

Flow rate required

Hose length & hose storage method  
Nozzle type - systems can be fitted with either standard top fill nozzles, Wiggins type "quick-fill" nozzles or both

Pump system - whether hydraulically, engine or pneumatically powered.  
Power requirements to achieve flows  
Flow meter - is the system to be used for reselling?

Filtration - specification for filters.

Management system to track who, when & how much fuel was taken.

### Tank filling methods

In most cases, it is beneficial for you to check with your fuel supplier as to what is their preferred method of filling your tank. This can be a bottom filling system with various connection fittings as required for filling within fuel depots or a different system as used in mining and civil construction (it is imperative that any system for bottom filling includes overfill protection) or simple top filling.

## Other tanks in our range



Tanks To AS2809 for DG vehicles



Diesel tanks for service trucks



Self-bunded aviation fuel tanks



Aviation fuel tanks



Demountable self-bunded tanks



Oil & water tanks for service trucks



Aluminium tanks to AS2809



Tanks to AS2809 for trailers

**Got a question?  
Need a quote?**

Call 1800-025 869 or  
email [sales@fuelequipment.com](mailto:sales@fuelequipment.com)

**Australian Fuelling Systems & Equipment**

PO Box 7162 NEMSC 2348 7-11 Armstrong Street Tamworth 2340

Ph: +61 2 6760 7816 Fax: +61 2 6760 7826

[www.fuelequipment.com](http://www.fuelequipment.com)

**Australian  
FUELLING  
Systems & Equipment**