

SmartFill fuel management system

from **Australian Fuelling
Systems & Equipment**

Fuel & Lubrication Equipment and Fluid Handling Specialists

SmartFill Fuel Management System



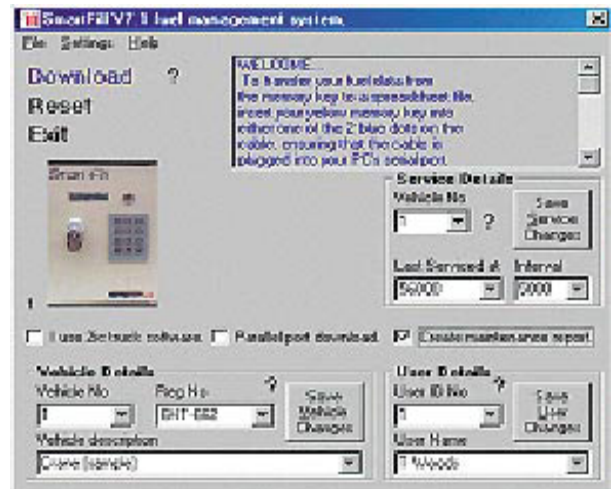
SmartFill fuel management system



SmartFill vehicle access keys



SmartFill download hardware



SmartFill software

There are many reasons to consider using a **SmartFill** fuel management system.....

- Records fuel use for up to 200 vehicles.
- Records the past 500 fuel issues in memory, and warns you when the memory is getting low.
- Uses secure vehicle keys, and user pin numbers to control access to your fuel. The pin number system may be turned off if required. The manager can disable or replace the vehicle keys and pin numbers at any time.
- Simple download of fuel data to your office computer using the Smart-Fill memory key system, which eliminates the need to carry a laptop, or install underground data cables, adding to the cost savings. **For remote locations, you can download your fuel data via the mobile phone network.** You can also download directly to a laptop computer or via a normal telephone modem.
- Includes "Walktime" timer to prevent bowser / pump from running for long periods with no fuel flow.
- The system may be used as a "preset" delivery system.
- **No battery backup** is required for data in memory.
- May be fitted to just about any fuel bowser, bulk fuel metering system or service vehicle.
- Uses a tough, weatherproof polycarbonate enclosure, painted in 2-pack white with stainless steel door hinges etc, for use outdoors in all locations and weather conditions.
- **Proven reliability in over 100 locations throughout Australia.**
- An ever-growing Australia wide network of support.
- Realistically priced, through lower manufacturing overheads.



This image shows a Smart-Fill system installed to a mechanical fuel bowser (Fleet-line T334 hi-flow diesel). The system may be installed to almost any mechanical fuel bowser.

HIGH CAPACITY SYSTEMS are available, with a capacity of 1000 vehicles and 1500 user pin numbers. These systems can store the past 1500 fuel issues in memory. Up to 8 fuel bowsers can be controlled at one site.

Call now for quotation on a SmartFill to fit to your existing or proposed fuel dispensing system

www.fuelequipment.com

See & purchase all you need in fuel equipment

Our web site offers full details and up-to-date prices on a huge range of fuel and liquid handling equipment with secure online purchasing facilities. **Compare our prices before you buy!**

Australian
FUELLING
Systems & Equipment



Australian Fuelling Systems & Equipment
PO Box 7162 NEMSC - 7-11 Armstrong Street, Tamworth NSW 2340
Ph 1800-025 869 Fax 1800-654 732 Email sales@fuelequipment.com

SmartFill Fuel Management System

How it works for you...

Accessing the fuel bowser...

1. The person fuelling the vehicle touches a special key to a small disc on the Smart-Fill unit. (Each vehicle has its own unique key on a small key ring). This identifies the vehicle to the Smart-Fill. If the vehicle key is not valid, the bowser won't start.
2. The Smart-Fill then asks for the persons pin number, and then the vehicle Speedo / hour meter reading.
3. The Smart-Fill checks the pin number. (The pin number also identifies the user).
4. If the pin number is not valid, the fuel bowser won't start, if the pin number is valid then the bowser works as normal.
5. When the fuel delivery is finished, the Smart-Fill records the fuel issue details in its memory. (When the memory is over 80% full (capacity of 500 fuel issues), the Smart-Fill system gives a continuous warning to tell you that you need to extract the fuel data and clear the memory.)

Downloading the fuel data to your office computer...

6. At the end of each month or preferred time period, the fuel use information is transferred from the Smart-Fill unit to your office computer using a special memory key. This eliminates the need to run data cables or carry a laptop computer to your fuel bowser.
7. **You simply clip the memory key into a holder inside the Smart-Fill and wait until the Smart-Fill beeps and tells you to remove the key.** This operation copies all of your fuel use history into the memory key, and takes around 3 minutes.
8. You then take your memory key into your office, and clip it into a special cable, which connects to the serial, parallel or USB port on your computer.
9. **The Smart-Fill software on your computer then extracts the data from the memory key and puts it into 2 spreadsheets**, which you can open in any spreadsheet program. i.e. Microsoft Excel® or Microsoft Works® etc.
10. You then clear the memory at your Smart-Fill unit to start the next period, usually monthly depending on the number of fuel issues taken per month from the bowser.
11. The Smart-Fill has many features not found in systems which cost twice the price. Please take the time to obtain a firm price to install a complete system, remembering **that you don't have to run data cables etc to a Smart-Fill system**

Excel spreadsheet reports

Issue	User	Vehicle	Reg No	Item	Litres	Cost / Hrs	Time	Date
1	S Smith	12	1AF4712	Merlan	32.7	249.00	13:49	10/05/01
2	L Jones	3	1AF1938	Ford P/M	1.0	302.00	13:11	10/05/01
3	L Jones	3	1AF1938	Ford P/M	338.3	302.00	13:06	10/05/01
4	S Smith	11	1AJ4823	Kate	85	6786	8:06	10/05/01
5	R Green	15	9F0623	Toyota Hilux	36	1732.00	8:53	10/05/01
6	G Black	8	1AW0337	Merck P/M	272	2733	18:47	17/05/01
7	L Jones	3	1AF1938	Ford P/M	250	302.00	18:24	17/05/01
8	S Smith	15	1AC1921	Toyota Hilux	137.4	2683.00	17:25	17/05/01
9	L Jones	3	1AF1938	Merck P/M	224	3320	16:29	17/05/01
10	L Jones	40	0R050	Homatrix	53.4	189.58	16:25	17/05/01
11	T Wright	5	832726	Merck P/M	386.2	4083	16:14	17/05/01
12	M Knight	4	3L0312	Merck P/M	64.8	3121	16:11	17/05/01
13	W Clarke	2	1AF1938	Merck P/M	484.2	3321.9	16:02	17/05/01
14	H Jones	6	1AF0851	Merck P/M	239	3287.8	16:47	17/05/01
15	S Smith	14	9F1	Taxan	289.9	655.8	16:20	17/05/01
16	S Smith	23	9F0623	Toyota Hilux	88.1	2323.8	16:22	17/05/01

The "issues" spreadsheet shown here contains the past 500 fuel issues. Note that the Smart-Fill keeps track of speedo readings for you.

Vehicle	Reg No	Item	Litres
1	1AC1921	Merck P/M	651.4
2	1AF1938	Merck P/M	7115.0
3	1AF1938	Ford P/M	688.9
4	3L0312	Merck P/M	308.4
5	832726	Merck P/M	551.4
6	1AF0851	Merck P/M	822.4
7	9F0623	Merck P/M	488.2
8	1AW0337	Merck P/M	588.1
9			0
10			0
11	1AJ4823	Kate	720.4
12	1AF1938	Merck P/M	482.3
13	9F0623	Toyota Hilux	396
14			0
15			0
16	1AC1921	Toyota Hilux	546.3
17			0
18			0
19	3L0312	Merck P/M	186.3

The "totals" spreadsheet shown here contains the total amount of fuel taken by each vehicle, since the memory was last cleared.

Flexible installation



This image shows a Smart-Fill system installed to an electronic fuel bowser (Pacesetter hi-flow diesel). The system may be installed to almost any electronic fuel system.

Smart-Fill systems are proudly designed and built In **Australia**

Australian FUELLING Systems & Equipment

Australian Fuelling Systems & Equipment
 PO Box 7162 NEMSC - 7-11 Armstrong Street, Tamworth NSW 2340
 Ph 1800-025 869 Fax 1800-654 732 Email sales@fuelquipment.com